

saferbromley partnership

Contact for this Agenda: Kerry Nicholls
Tel: 020 8313 4602
E-mail: kerry.nicholls@bromley.gov.uk
London Borough of Bromley
4 December 2012

To: Members of the

saferbromley partnership

STRATEGIC GROUP

Councillor Tim Stevens J.P. (Chairman)
Stephanie Roberts, (Borough Police Commander) (Vice-Chairman)
Rob Clarke, (London Probation Service)
James Cleverly, (Police and Crime Committee, Greater London Authority)
Paul Cook, (London Ambulance Service)
Nigel Davies, (LBB Director, Environmental Services)
Clive Davison, (LBB Assistant Director, Public Protection)
Sarah Denton, (Mayor's Office for Policing and Crime)
Selene Grandison, (SE London Probation Service)
Andrew Holcombe, (Borough Commander, Fire Services)
Colin Maclean, (Community Links Bromley)
Ulanta Messeter, (Magistrates Court)
Paula Morrison, (Assistant Director, Public Health)
Colin Newman, (LBB Head of Community Safety)
Jo Oakley, (Deputy Borough Commander)
Howard Oldstein, (The Glades)
Doug Patterson, (LBB Chief Executive)
Lulu Pearce, (Ethnic Communities Programme Manager)
Gill Rose, (Federation of Bromley Housing Associations)
Jamie Rounph, (Affinity Sutton)
Paula Tucker, (UK Border Agency)
Non Voting Members: Councillor Reg Adams and Councillor Julian Benington

A meeting of the Safer Bromley Partnership Strategic Group will be held at Committee Rooms, Bromley Civic Centre on THURSDAY 13 DECEMBER 2012 at 10.00 am

A G E N D A

- 1 INTRODUCTIONS / APOLOGIES FOR ABSENCE
- 2 MINUTES OF LAST MEETING / MATTERS ARISING (Pages 3 - 10)
- 3 CHAIRMAN'S UPDATE (VERBAL UPDATE)

- 4 BOROUGH COMMANDER UPDATE (VERBAL UPDATE)**
- 5 PERFORMANCE MANAGEMENT REPORT (QUARTER 2, JULY - AUGUST 2012)** (Pages 11 - 18)
- 6 RESIDENTIAL BURGLARY ANALYSIS (APRIL - SEPTEMBER 2012)** (Pages 19 - 24)
- 7 PUTTING VICTIMS FIRST - MORE EFFECTIVE RESPONSES TO ANTI-SOCIAL BEHAVIOUR** (Pages 25 - 32)
- 8 PAYBACK PRESENTATION**
- 9 SAFER BROMLEY CRIME SUMMIT (VERBAL UPDATE)**
- 10 MOPAC UPDATE (VERBAL UPDATE)**
- 11 SUPPORT GROUP UPDATES**
(Substance Misuse Board, Youth Offending Service, Bromley Community Engagement Forum, Arson Sub-Group and Borough Resilience Forum) – (Verbal reports)
- 12 COMMUNICATIONS UPDATE (VERBAL UPDATE)**
- 13 INFORMATION ITEMS**
 - a SAFER BROMLEY AWARDS - THURSDAY 14TH MARCH 2013** (Pages 33 - 36)
 - b FIRE BRIGADE COMMENDATION** (Pages 37 - 38)
 - c BOROUGH COMMANDER'S UPDATE** (Pages 39 - 48)
- 14 ANY OTHER BUSINESS**
- 15 DATE AND TIME OF NEXT MEETING**
10.00am, Thursday 21st March 2013

.....

Agenda Item 2

SAFER BROMLEY PARTNERSHIP STRATEGIC GROUP

Minutes of the meeting held at 9.00 am on 27 September 2012

Present:

Councillor Tim Stevens J.P. (Chairman)
Stephanie Roberts (Borough Police Commander) (Vice-Chairman)
Councillor Reg Adams
Councillor Julian Benington
Rob Clarke, (London Probation Service)
Nigel Davies, (LBB Director, Environmental Services)
Clive Davison, (LBB Assistant Director, Public Protection)
Sarah Denton, (Mayor's Office for Policing and Crime)
Andrew Holcombe, (Borough Commander, Fire Services)
Colin Maclean, (Community Links Bromley)
Paula Morrison, (Assistant Director, Public Health)
Colin Newman, (LBB Head of Community Safety)
Lulu Pearce, (Ethnic Communities Programme Manager)

Also Present:

Councillor Peter Fookes
Susie Clark, (LBB Communications Officer)
Pratheepan Jeyapragasam, (LBB Crime Analyst)
Stephen Lewis, (LBB Emergency Planning Manager)
Claire Lynn, (Strategic Commissioner - Mental Health and Substance Abuse)
Ian Smith, (Bromley Community Engagement Forum)
Jan Smith, (LBB Youth Programme Manager)
Elayne Stewart, (LBB Group Manager, Youth Offending Service)
Mark Thorn, (LBB Head of Service Referral & Assessment)
Kay Weiss, (LBB Assistant Director: Safeguarding and Social Care)

1	INTRODUCTIONS / APOLOGIES FOR ABSENCE	Action
	Apologies were received from Councillor Roxhannah Fawthrop, James Cleverly (Police and Crime Committee, Greater London Authority) and Paul King (LBB Head of Bromley Youth Support Programme).	
2	MINUTES OF LAST MEETING / MATTERS ARISING	Action
	The notes of the last meeting held on 28 th June 2012 were received. It was AGREED that the minutes be approved.	
3	CHAIRMAN'S UPDATE	Action
	The Chairman was pleased to announce that the Commissioner and Assistant Commissioner of the Metropolitan Police would be hosting	

	<p>an event for residents of the London Boroughs of Bromley and Croydon on 30th January 2013 in the Council Chamber at Bromley Civic Centre. This would provide an opportunity for both residents and partners to question the Commissioner on policing issues and for the Commissioner to present his vision for the future delivery of policing across London.</p> <p>The Chairman highlighted that a baseline budget review was currently being undertaken across the Council which could impact the way services were delivered in future.</p> <p>Members of the Partnership joined the Chairman in offering thanks to Ruksana Mannan, Community Safety Project Officer, who was leaving to take up an opportunity as Project Officer in the Crime Reduction Team at Lambeth Council. It was also noted that Charles Griggs, former Borough Commander for Bromley was shortly to retire from his role in the London Borough of Southwark and the Chairman led the Partnership in offering their thanks for his service to the Borough.</p> <p>It was AGREED that the update be noted.</p>	
4	BOROUGH COMMANDER'S UPDATE	Action
	<p>The Borough Commander was pleased to announce that the three Chief Inspectors for Bromley were now in post.</p> <p>Work was currently underway to develop a more efficient, cost-effective policing model across London, delivering police services through a basic command unit model which would bring one or more boroughs under the leadership of a Chief Superintendent. The current proposals were for Bromley to have a shared services model with the London Borough of Bexley and a consultation on the proposed model would be taking place from October 2012. The Borough Commander encouraged all members of the Partnership to contribute to the consultation.</p> <p>It was AGREED that the update be noted.</p>	All Partners
5	PERFORMANCE MONITORING REPORT QUARTER 1 APRIL - JUNE 2012	Action
	<p>Consideration was given to the performance monitoring report for Quarter 1, 2012/13 which reported progress against 4 key indicators.</p> <p>Performance Indicator 1: Reduction in Number of Violent Crimes showed that offences related to Violent Crimes represented 20% of the Total Notifiable Offences in Q1, with a reduction of 224 offences compared to the same period in 2011/12. This included a reduction of 52 Harassment offences and 159 Assault with Injury offences.</p> <p>Performance Indicator 2: Reduction in Numbers of Property Crimes within Bromley showed that offences related to property crimes represented 67% of the Total Notifiable Offences in Q4, with a decrease of 298 offences compared to the same period last year. This included a decrease in robberies by 33%, theft and handling by</p>	

	<p>10% and criminal damage by 22%. There had been a 17% increase in burglaries, which was reflected at the national level, but this was being targeted and the number of burglary offences had significantly reduced in the last quarter.</p> <p>Progress against Performance Indicator 3: Reduction in Levels of Recorded Anti-Social Behaviour showed a reduction of 950 incidents of Anti-Social Behaviour reported compared to the same period in 2011/12. It was noted that there had been an increase in graffiti offences, and this was now being targeted.</p> <p>With regard to Performance Indicator 4: Increased Confidence in the Fact that Bromley is a Safe Place, it was noted that Quarter 1 data for 2012/13 had not yet been published but it was important to ensure partners continued to emphasise that Bromley was a safe place to live and work.</p> <p>The Chairman highlighted concerns around the increase in burglary and domestic violence offences and it was noted that these issues would be considered in greater detail at the next meeting of the Partnership.</p> <p>It was AGREED that the Performance Management Report for Qtr 1 2012/13 be endorsed.</p>	CN/PJ
6	RECOMMENDATIONS FROM TACKLING GANGS WORK	Action
	<p>Consideration was given to a report summarising the findings from the Gangs Review, which had been undertaken to assess the impact of gangs and gang membership on the Borough with a view to delivering a cross agency response to identify and minimise any negative consequences of gang membership and activity within the Borough. The review had identified a number of key issues that needed to be addressed to provide an effective response to any gang activity. These were:</p> <ul style="list-style-type: none"> • Partnership Working, Intelligence and Information Sharing • Identification of Gang Nominals and Gang Involvement • Safeguarding • Prevention • Early Intervention • Intensive Intervention • Parents, Community and Voluntary Sector <p>An action plan had been developed to address the identified issues through delivery of a number of short and long term recommendations, which included establishing a Lead Gangs Single Point of Contact and a Gangs Panel where partners could share information, and these were considered by Members of the Partnership.</p> <p>An issue had been identified around the need for partners to share information on gang nominals/members being relocated to the Borough. There was also a need to work with the South London</p>	

	<p>Executive had approved funds to be drawn from the Tackling Troubled Families Grant for the recruitment of four Family Support Practitioners and a Coordinator, and a limited pot of funding was also available for the commissioning of services to support the delivery of the scheme.</p> <p>In response to a question from a member of the Partnership, the Head of Service Referral & Assessment confirmed that families from hard-to-reach groups would be included as part of the scheme if they met the criteria. Paula Morrison highlighted the impact of mild anxiety and depression on families and suggested that access to psychological therapies be built into the scheme to support families where appropriate.</p> <p>It was AGREED that the update be noted.</p>	<p>All Partners</p>
8	<p>YOUTH ACTIVITY SUMMER PROGRAMME</p> <p>Consideration was given to an update on the summer programme of youth activities which had been delivered in parks across the Borough. During the course of the summer, 6,451 young people had attended 36 park day events where a diverse range of free activities had been offered, including land zorbing, bungee trampolining and craft activities. Following a successful advertising campaign which had utilised Facebook, QR Codes and other promotional materials, the scheme had successfully attracted a wide range of young people, including those from hard-to-reach groups, and feedback from the events had been extremely positive from those who had attended. There had also been a 13% decrease in the number of young people being stopped by the Police in August 2012 compared to the same period last year which could have been impacted by the provision of the events as diversionary activities.</p> <p>The Chairman praised the professionalism and dedication of the staff who had delivered these events. In considering the delivery of a similar programme for Summer 2013, a member of the Partnership queried whether funding could be sought from the commercial sector. There was potential for more involvement by schools, partners and other community organisations such as churches in any future scheme, and also to utilise parents and carers as volunteers to help deliver events. The Chairman noted the importance of making information, advice and guidance available to young people at these events. It was also important to ensure that the most vulnerable young people were given the opportunity and encouragement to attend future events.</p> <p>It was AGREED the update be noted.</p>	<p>Action</p> <p>All Partners</p>
9	<p>PAYBACK UPDATE</p> <p>Rob Clarke, London Probation Service was pleased to announce that London Probation Trust had been awarded the contract to deliver</p>	<p>Action</p>

	<p>community service across London in partnership with Serco. The new delivery model would begin from 31st March 2012 and would include a more intensive programme of community service, with the expectation that offenders would work more frequently and that unemployed offenders would work up to 21 hours per week where appropriate. Community service would also begin within 7 days of an order being imposed.</p> <p>Projects for community service had yet to be confirmed, however these projects would be broken down into two stages. Offenders would start working in unskilled manual labour projects and, could then move to more skilled placements when a level of trust was demonstrated, giving offenders the opportunity to gain work skills.</p> <p>It was AGREED that the update be noted.</p>	
10	SUPPORT GROUP UPDATES	Action
	<p><u>Drug Action Team Report</u> – Claire Lynn confirmed that adult drug treatment services had been re-tendered and were now being delivered as an integrated service. There had been a change of definition for services from ‘problematic’ and ‘non-problematic’ drug users to ‘opiate’ and ‘non-opiate’ drug users, and work was being undertaken with the Police, health services and schools to support more people into treatment. Drug testing of those in Police custody would be rolled out across London which might increase the number of drug users referred for treatment.</p> <p><u>Youth Offending Service Report</u> – Elayne Stewart confirmed that a number of inspections of Youth Offending Services had been announced for 2012/13, including an inspection of victim contact work to take place in the London Region in November 2012. The level of compensation young offenders were expected to pay to victims of crime had increased from 10% to 40%. Young offenders had been encouraged to become involved in the Youth Activity Summer Programme.</p> <p><u>Bromley Community Engagement Forum Report</u> – Ian Smith confirmed that the next public meeting of the Bromley Community Engagement Forum would be at 7.00pm on 29th November 2012 at Bromley Town Football Club. A Special Schools Conference would take place on 12th February 2013 at the Education Development Centre, and the Youth Conference had been arranged for 27th March 2013 and would look at a number of issues including gangs, mutual respect, cyber-bullying and alcohol and drug abuse.</p> <p><u>Arson Sub-Group Report</u> – Andy Holcombe reported that there had been 140 incidents of arson in the past two months, which was a significant reduction on the same period two years ago. Preventative work was continuing with the second LIFE course now underway. An Impact Factor day had recently been delivered to Years 8 and 9 at</p>	All Partners

	<p>Harris Beckenham Academy School and a further eight events were planned which aimed to stop young people engaging in antisocial behaviour. Work was also being undertaken with the Police to identify those at risk of burglary during fire home safety visits. It was noted that consideration was currently being given to the future delivery model for fire services across London and that more information would be provided to the Partnership in due course.</p> <p><u>Operational Tasking Report</u> – The Borough Commander was pleased to confirm that over 1225 arrests had been made and 272 uninsured vehicles seized as part of Operation Reclaim during July and August 2012. Incidents of a range of crimes had decreased including Serious Violence (by 32%), Robbery (by 26%) and Knife Crime (by 33%). A number of arrests had also been made for drug related offences. Burglary was still being targeted as a priority in the Borough and a number of arrests had been made. There had been a slight increase in Domestic Violence and the Borough Commander underlined the need for partners to focus on this area. Issues had also been identified around the need for partners to share information on gang nominals/members being relocated to the Borough.</p>	<p>AH</p> <p>All Partners</p>
<p>11</p>	<p>BROMLEY BOROUGH RESILIENCE FORUM - DRAFT TERMS OF REFERENCE</p> <p>Consideration was given to the draft Terms of Reference of the Borough Resilience Forum which aimed to facilitate cooperation and information sharing at a Borough-level between agencies responsible for coordinating, planning and endorsing an effective emergency response and recovery for the Borough. The draft terms of reference included the need for the Borough Resilience Forum to report work and recommendations to the Strategic Group of the Safer Bromley Partnership and this was noted by members of the Partnership.</p> <p>The Emergency Planning Manager outlined the work of the Forum which brought together a wide range of agencies to develop emergency procedures and protocols for the Borough. Twenty four plans had been developed to cover a wide range of emergency situations, and on average 2-3 emergencies a month were responded to by partners. Recent exercises had included a live exercise at London Biggin Hill Airport around fire to an aircraft. Emergency plans had also been developed for key locations across the Borough including The Glades Shopping Centre and Bethlem Royal Hospital, and training programmes were delivered to equip people in responding to emergency situations.</p> <p>The draft Terms of Reference of the Borough Resilience Forum were AGREED.</p>	<p>Action</p>
<p>12</p>	<p>OPERATION MAQUINA</p> <p>Consideration was given to an update on Operation Maquina which</p>	<p>Action</p>

	<p>would take a multi-agency approach to target a range of issues in an identified area in the Borough. The first area to be targeted would be Penge, and a range of agencies including Enforcement and Trading Standards would be undertaking operations in the area. In response to a question from the Chairman, the Head of Community Safety confirmed that Councillors would be contacted if their wards were to be targeted, and that a further update on Operation Maquina would be provided at the next meeting of the Partnership.</p> <p>It was AGREED that the update be noted.</p>	CN
13	COMMUNICATIONS UPDATE	Action
	<p>Susie Clark provided an update on the Safer Bromley News, the electronic newsletter showcasing the work of the Safer Bromley Partnership. The Summer 2012 edition had recently been published, and partners were encouraged to submit their stories by early October 2012 for inclusion in the Autumn 2012 edition.</p> <p>A meeting of the Partnership's Communications Leads would be held at 2.30pm on 10th October 2012 and invitations would be sent out shortly.</p> <p>It was AGREED the update be noted.</p>	All Partners SC
14	INFORMATION ITEMS	Action
	(a) The London Crime Reduction Board Partnership Anti Gangs Strategy had been circulated for information.	
15	ANY OTHER BUSINESS	Action
	It was noted that Diversity Day in Bromley would be held from 10.30am on Tuesday 16 th October 2012 in the Great Hall at Bromley Civic Centre and members of the Partnership were invited to attend.	All Partners
16	DATE AND TIME OF NEXT MEETING	Action
	<p>All meetings start at 10.00am unless otherwise notified.</p> <p>Thursday 13th December 2012 Thursday 21st March 2013</p>	

The Meeting ended at 12.24 pm

Chairman

Meeting:	Safer Bromley Partnership Strategic Group
Date:	13th December 2012
Subject:	Performance Review 2011/2012 Quarter 2
Author:	Pratheepan Jeyapragasam, Senior Crime Analyst pratheepan.jeyapragasam@bromley.gov.uk

1 SUMMARY

- 1.1 This report is presented in order to update the Safer Bromley Partnership on the performance achieved against the targets set in the last year Community Safety plan 2012/13. The report provides the latest performance monitoring data to 30th September 2012 (Quarter 2).

2 RECOMMENDATION

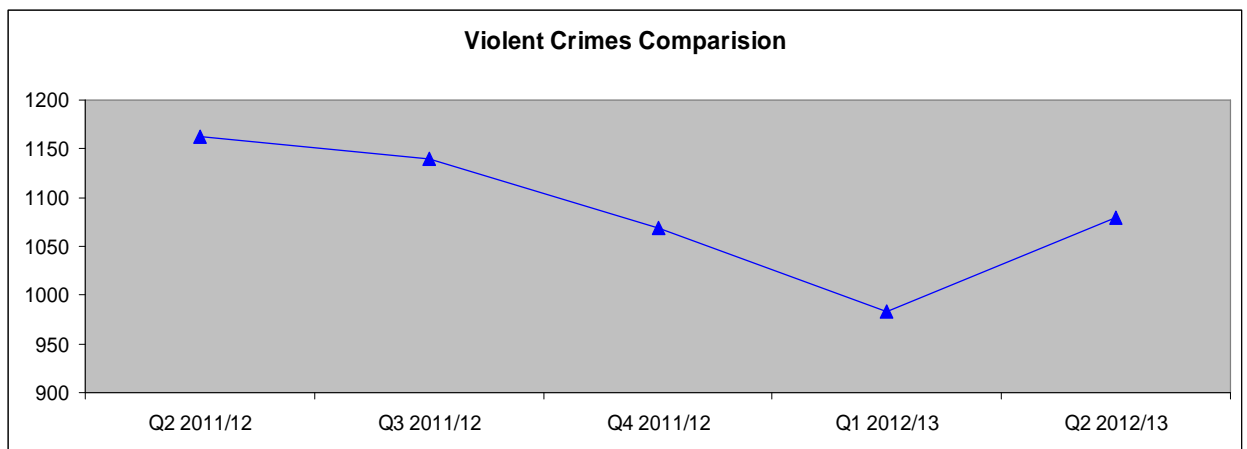
- 2.1 The Strategic Group is asked to:
- Note and comment on the performance information contained within the report.

3 BACKGROUND INFORMATION

- 3.1 This report provides an update of performance at the end of Quarter 2 in the delivery year 2012/2013. The performance picture across the range of Partnership activity continues to be healthy.
- 3.2 A summary of the “portfolio” of offences and Anti Social Behaviour that are included within these overarching targets is provided at Appendix 1. Reporting on individual crime types and detail of individual operations will only be made as a routine if achievement against set targets is not being made or, in some cases, where the measurable rates of individual offences or types of offending are significantly different from expected trends and predicted patterns etc. The management of these operational level issues will be dealt with outside of the Strategic Group at the combined Police/Partnership Tactical Tasking and Coordination Group chaired by the Borough Police Superintendent.

Performance Indicator 1- Reduction in Numbers of Violent Crimes Within Bromley

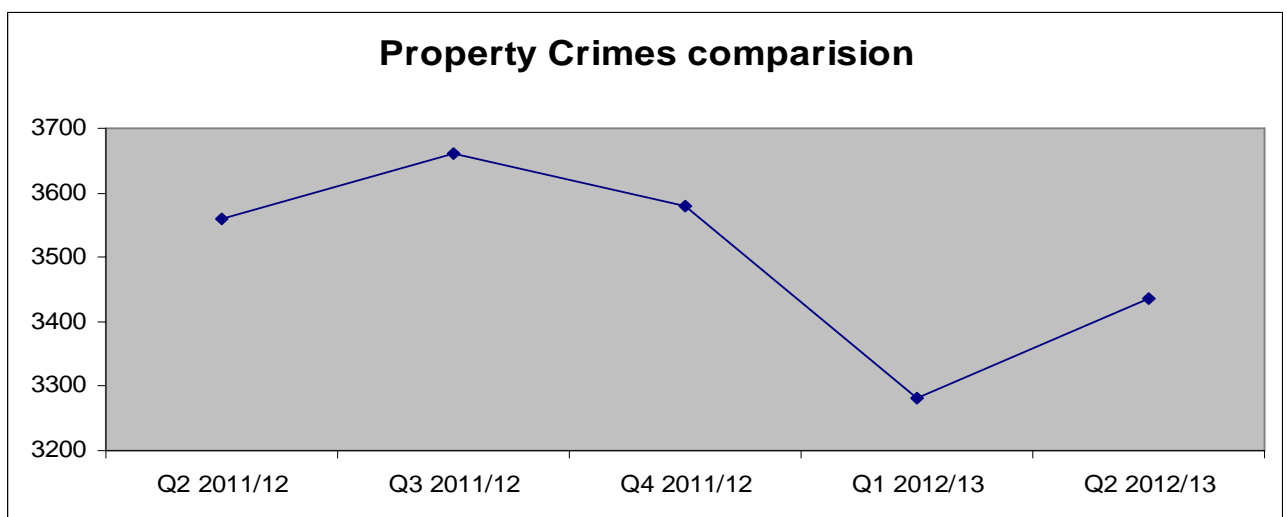
- 3.3 Offences related to Violent Crimes represent 21% (1079) of the Total Notifiable Offences in the period of Quarter 2 this year. The chart overleaf provides more detail.



3.4 During the period July to September 2012 there were 1079 Total Violent Offences reported to the Police. This represented a reduction of 84(↓ 7%) offences compared with the same period previous year this includes a reduction of 44 Wounding/GBH offences and 104 Assault with Injury offences.

Performance Indicator 2- Reduction in Numbers of Property Crimes Within Bromley

3.5 Total offences to property Crimes represent 67% of the Total Notifiable Offences in the period of Quarter 2 this year.

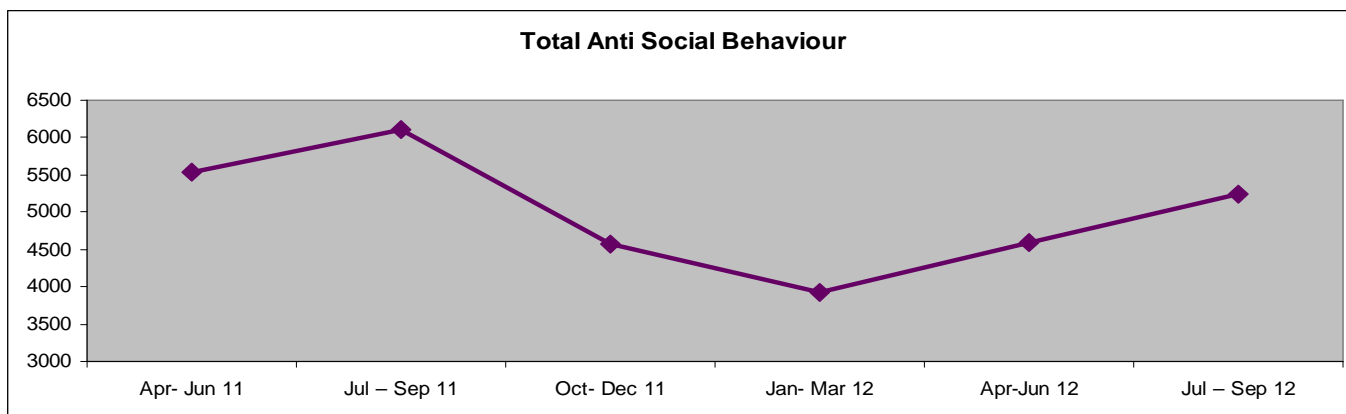


3.6 During the July to September period of 2012 there were 3,437 Total Property related Offences reported to the Police, this represented a decrease of 122 (↓3%) offences compared with the same period previous year.

3.7 During this reporting period, the Borough had experienced 732 Burglaries, 167 Robberies, 1947 Theft & Handling and 591 Criminal Damages. Whilst the reduction in levels of overall property crime are positive, it should be noted that, compared with the same period in the

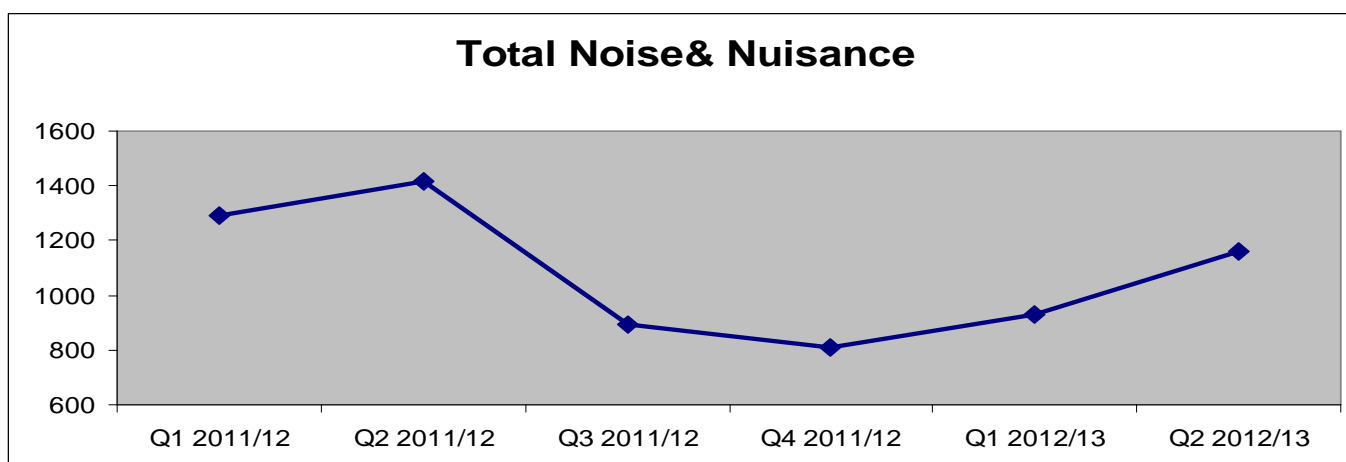
previous year, Robberies were increased by 2% (4 offences). In relation to Burglaries, Theft & Handling and Criminal Damage, all these offences are decreased. They were decreased by 2% (17 offences), 2% (42 offences) and 10% (67 offences) respectively.

Performance Indicator 3 Reduction in Levels of Recorded Anti Social Behaviour

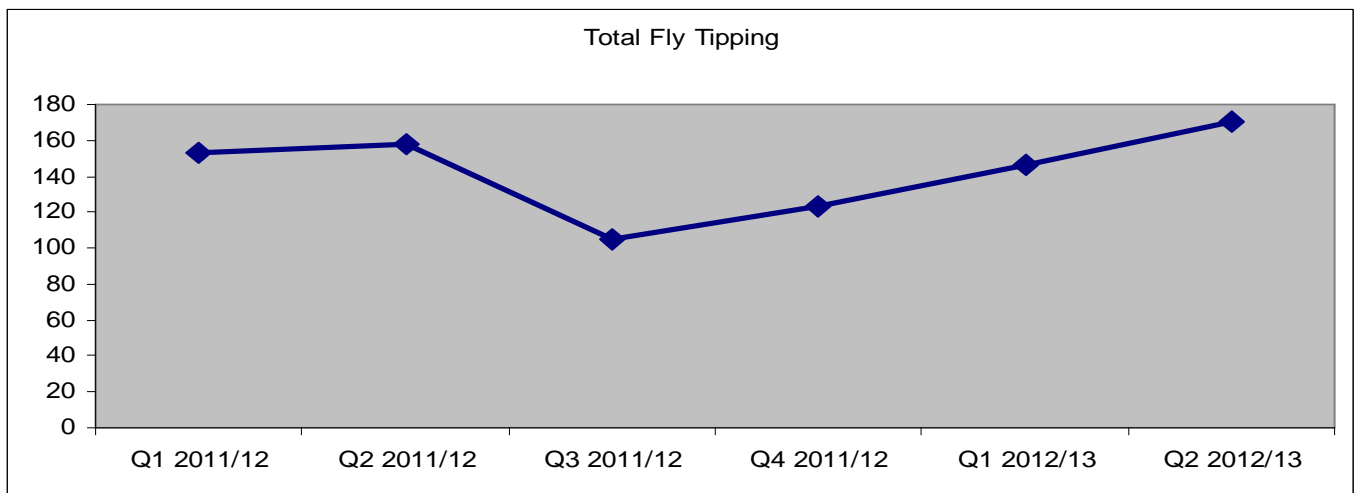


	Jul – Sep 11	Oct- Dec 11	Jan- Mar 12	Apr- Jun 12	Jul – Sep 12
Noise & Nuisance	1418	891	809	931	1162
Graffiti	1190	961	581	1108	787
Fly Tipping Investigation	158	105	123	146	170
ASB to Council	111	116	134	108	126
ASB to Police	3223	2497	2276	2291	2999
Total ABS	6100	4570	3923	4584	5244

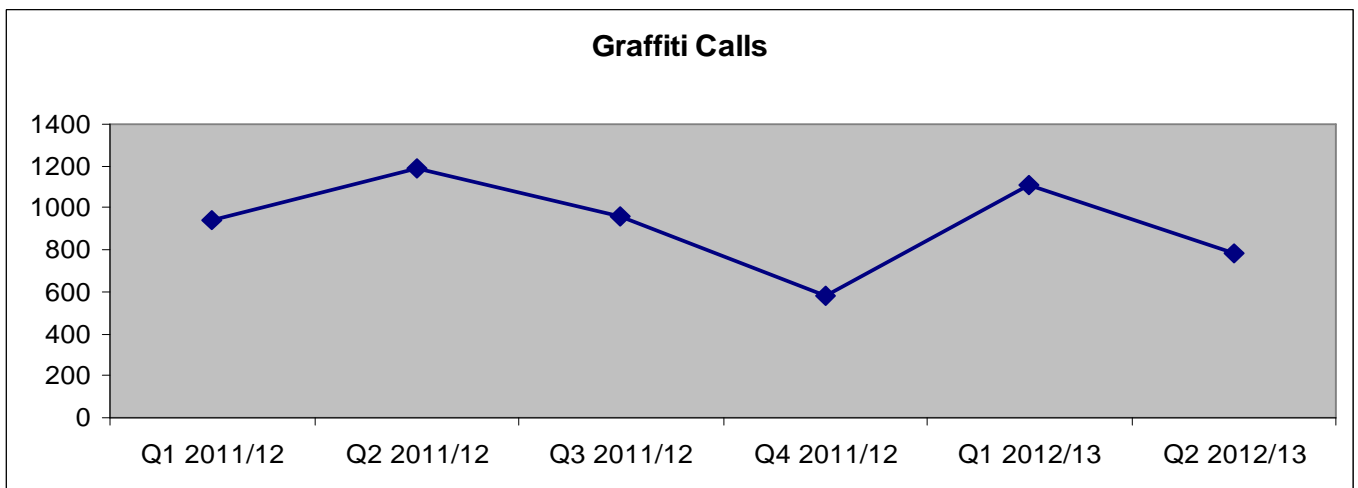
3.8 During the reporting period, the Borough has experienced a reduction of 856 (14%) incidents of ASB reported when compared with the same period last year.



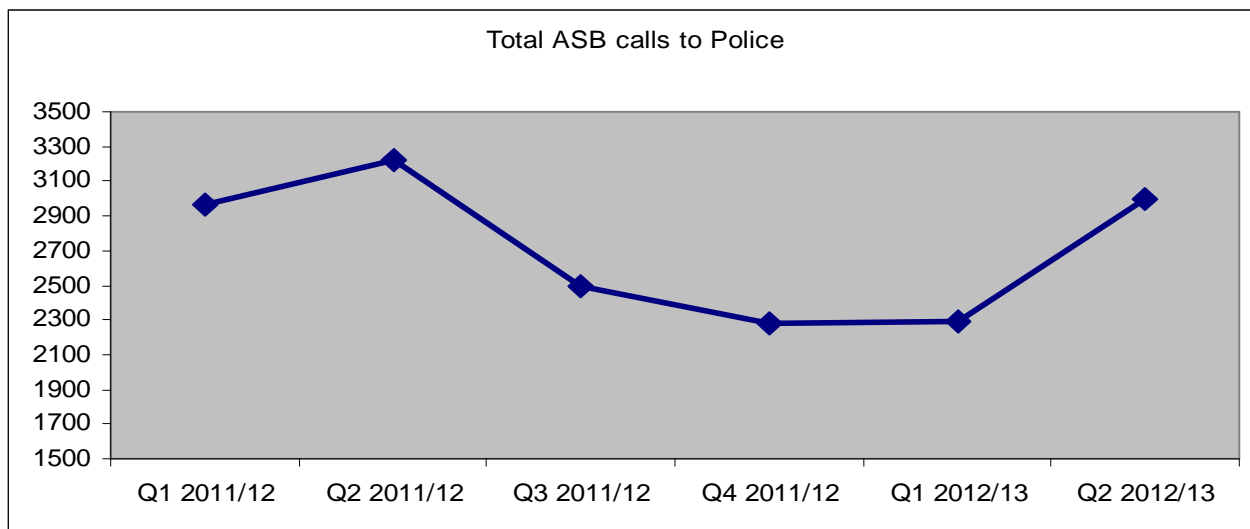
3.9 As can be seen from the figure above, during the reporting period (July to September 12), the Borough has experienced a reduction of 256 (18%) incidents of Noise and Nuisance ASB reported when compared with the same period last year. This includes a reduction of 84 Domestic Noise and 168 Noise incidents.



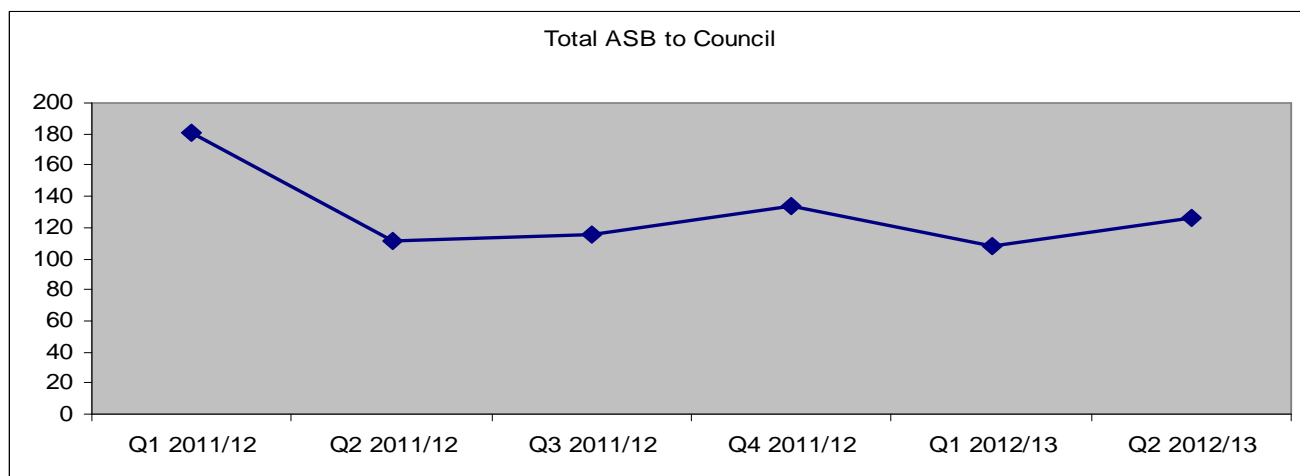
3.10 As can be seen from the figure above, during the reporting period, the Borough has experienced an increase of 12 incidents of Fly Tipping ASB reported when compared with the same period last year.



3.11 As can be seen from the figure above, during the reporting period, the Borough has experienced a reduction of 158 incidents of Graffiti ASB reported when compared with the same period last year.



3.12 During this reporting period it is noted that there was a reduction of 224 incidents reported to police regarding ASB compared with the same period last year.



3.13 During July to September 2012 the Borough has experienced a reduction of 15 incidents of ASB reported when compared with the same period last year.

Performance Indicator 4 Increased Confidence in the Fact that Bromley is a Safe Place

3.14 In relation to this performance indicator, (Question 74AB :) “To what extent do you agree that the police and local council are dealing with the ASB and crime issues that matter in this area” has not been published in the Q2 report by Met police.

3.15 In relation to perception about crime and ASB less Bromley residents (↓4% -compared with same period last year) are worried about ASB and crime in their area. See below

METROPOLITAN POLICE

TOTAL POLICING

Public Attitude Survey 2012/13

Chapter 4: Perceptions about crime and ASB

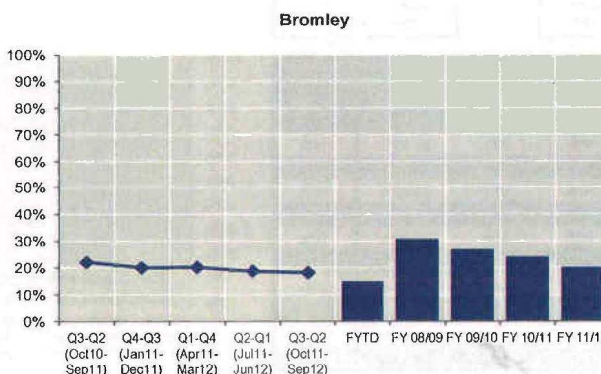
Q15: To what extent are you worried about ASB in the area?

Base: all respondents, excluding 'don't know'

Difference from previous quarter [Borough]: -1%

Difference from same quarter in 2011/12 [Borough]: -4%

% worried (very/fairly)	Bromley			MPS
	%	Base	Confidence interval	%
Q3-Q2 (Oct10-Sep11)	22%	520	±3.56%	25%
Q4-Q3 (Jan11-Dec11)	20%	462	±3.65%	25%
Q1-Q4 (Apr11-Mar12)	20%	402	±3.92%	26%
Q2-Q1 (Jul11-Jun12)	19%	401	±3.82%	26%
Q3-Q2 (Oct11-Sep12)	18%	403	±3.76%	26%
FYTD	15%	201	±4.93%	27%
FY 08/09	31%	634	±3.59%	39%
FY 09/10	27%	640	±3.43%	25%
FY 10/11	24%	638	±3.32%	25%
FY 11/12	20%	402	±3.92%	26%



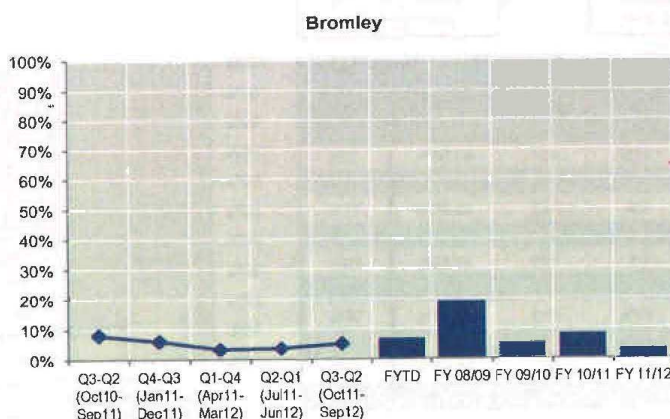
Perceptions of ASB

Q10A-G [composite]: Perceptions of ASB Base: all respondents, excluding those indicating 'don't know' to any of the seven composite factors

Difference from previous quarter [Borough]: +1%

Difference from same quarter in 2011/12 [Borough]: -3%

% high level of worry	Bromley			MPS
	%	Base	Confidence interval	%
Q3-Q2 (Oct10-Sep11)	8%	479	±2.43%	11%
Q4-Q3 (Jan11-Dec11)	6%	429	±2.25%	10%
Q1-Q4 (Apr11-Mar12)	3%	366	±1.82%	9%
Q2-Q1 (Jul11-Jun12)	4%	363	±1.91%	10%
Q3-Q2 (Oct11-Sep12)	5%	369	±2.26%	11%
FYTD	7%	189	±3.61%	13%
FY 08/09	19%	505	±3.44%	23%
FY 09/10	5%	488	±2.02%	13%
FY 10/11	8%	551	±2.29%	12%
FY 11/12	3%	366	±1.82%	9%



APPENDIX 1

Performance Indicator Portfolios:

Violence Portfolio	
Offences	Supporting Measures
Violence with Injury	Domestic Violence
Common Assault	Domestic Violence Sanction Detection Rate
Harassment	Domestic Violence Arrest Rate
Threats/ Conspiracy to Kill	Serious Youth Violence
Blackmail	Knife Enabled Crime
Kidnapping/ False Imprisonment	Knife Enabled Crime Sanctioned Det. Rate
	Gun Crime
	Gun Crime Sanctioned Det. Rate
	Most Serious Violence
	Most Serious Violence Sanctioned Det. Rate

Property Portfolio
Offences:
Personal Robbery
Commercial Robbery
Total Robbery
Residential Burglary
Non-Residential Burglary
Theft/Taking Motor Vehicles
Theft From Motor Vehicles
Theft From Shops
Theft From Person
Theft of Pedal Cycles
Other Theft
Criminal Damage

Anti Social Behaviour Portfolio
ASB:
Noise & Nuisance
ASB to Council
Fly Tipping
ASB to Police
Graffiti

This page is left intentionally blank

Meeting:	Safer Bromley Partnership Strategic Group
Date:	13th December 2011
Subject:	Residential Burglary Analysis (April – September 2012)
Author:	Pratheepan Jeyapragasam, Senior Crime Analyst pratheepan.jeyapragasam@bromley.gov.uk

1 SUMMARY

1.1 This report provides an update in relation to the analysis of Burglary between April and September 2012. There are two burglary offences which are covered by the analysis and, therefore, the data is presented under each of these offences:

- Burglary in a Dwelling
- Burglary in Other Buildings

1.2 The analysis indicates a number of key factors in the current pattern of residential burglary and it is proposed that these key factors be tackled in order to facilitate a reduction in offending. Further, the report recognises the importance of analysis of victim data and recommends that further work is undertaken in this area.

2 RECOMMENDATION

2.1 The Strategic Group is asked to note the information contained within this report and comment on the key findings.

2.2 In particular, the Safer Bromley Partnership is asked to commission further analysis to identify the key profiles of victims of Burglary in a Dwelling across the borough.

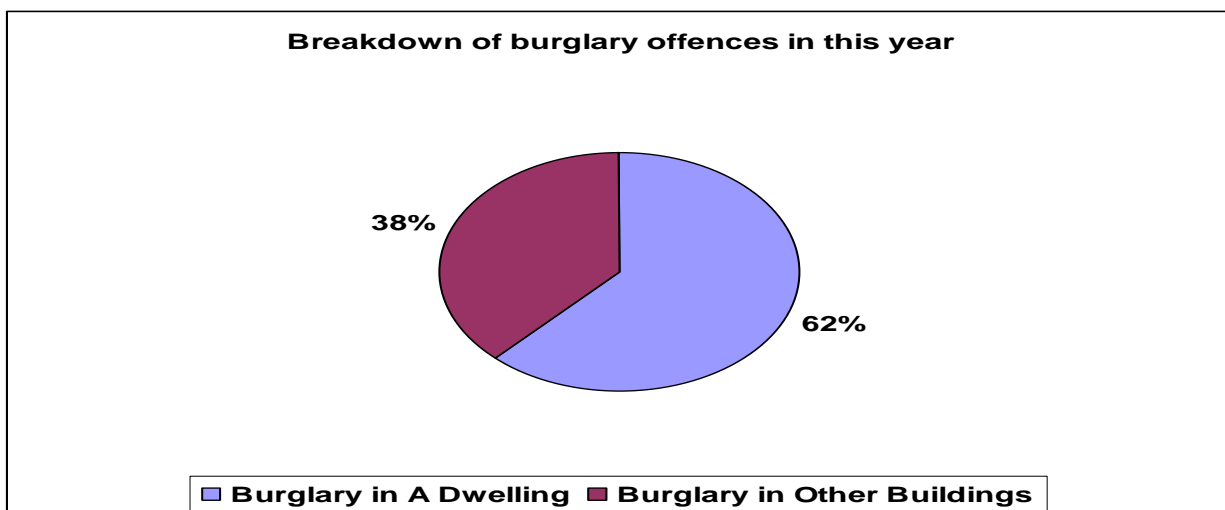
2.3 The Partnership is advised that work be intensified to continue the delivery prevention advice to decrease Burglary offences (to include specific focus in terms of location and offence types). Delivered by Safer Neighbourhood Development Officers.

2.4 Analysis indicates that offences generally occur overnight, therefore it may also be appropriate to review the late night security at some venues, especially those along the borough's borders.

2.5 Continue monitoring trends in details. Of Burglary in a Dwelling and task resources as suggested by that analysis.

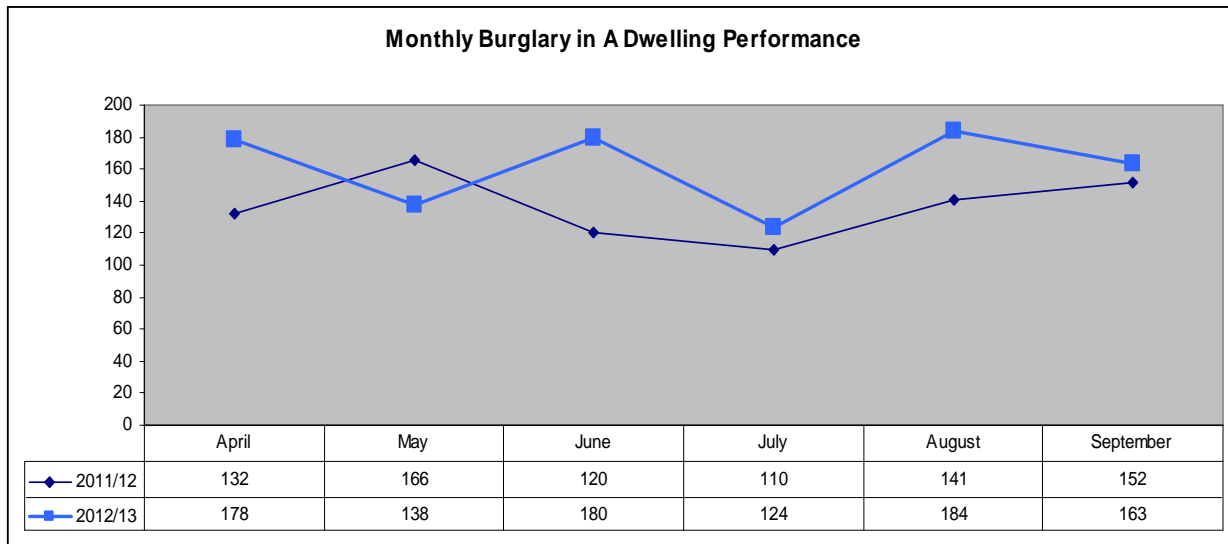
3 BACKGROUND INFORMATION

- 3.1 At the last meeting of the Safer Bromley Partnership, the Performance Management Report revealed a 17% increase in Burglary in the previous quarter. Further, it was noted that Bromley's rate was higher than the London average. This review investigates the reasons for this increase. The data range used for the local analysis part of this investigation is from April to September 2012. Therefore mention of 'this year' refers to the period 1st April 2012 to 30th September 2012.
- 3.2 From April 2012 to June 2012 (Q1), Bromley's rate of Burglary has been substantially higher (162 offences) than the Metropolitan Police average. Between July 2012 (Q2) and September 2012 Bromley's rate was also higher than the average for most similar Metropolitan Police average, although this trend appears to have decreased (94 offences) over the Q2 period.
- 3.3 Chart 1 below shows the proportion of Total Burglary falling into the two types of burglary in this year.

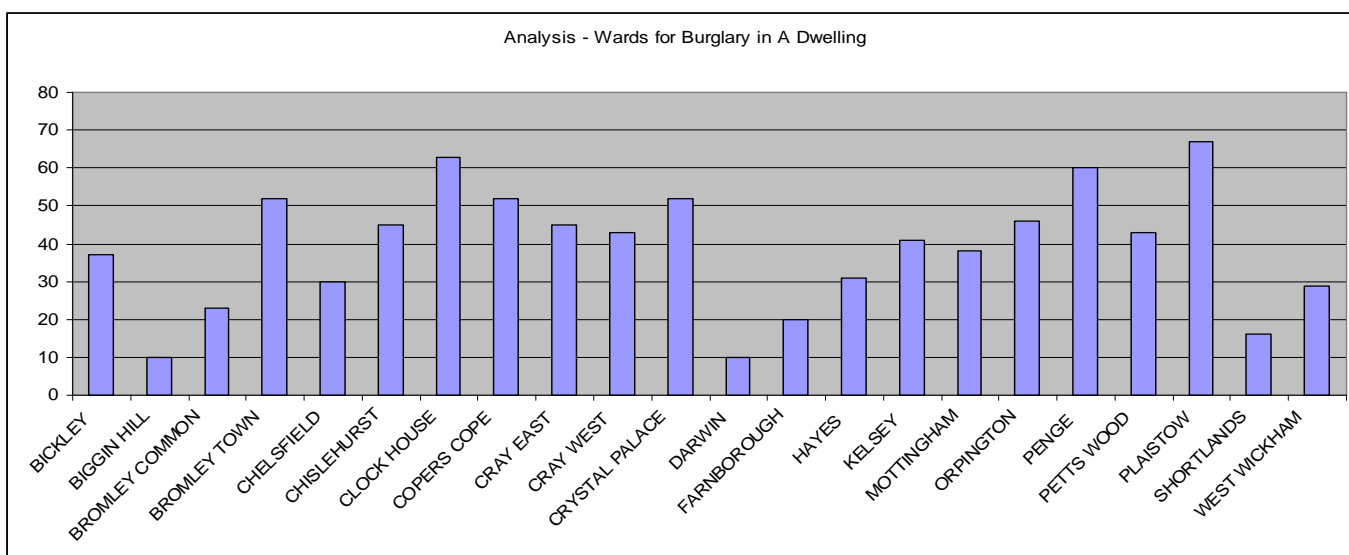


- 3.4 As shown in the Chart above, 62% of burglary offences were Burglary in A Dwelling offences.

Burglary in A Dwelling

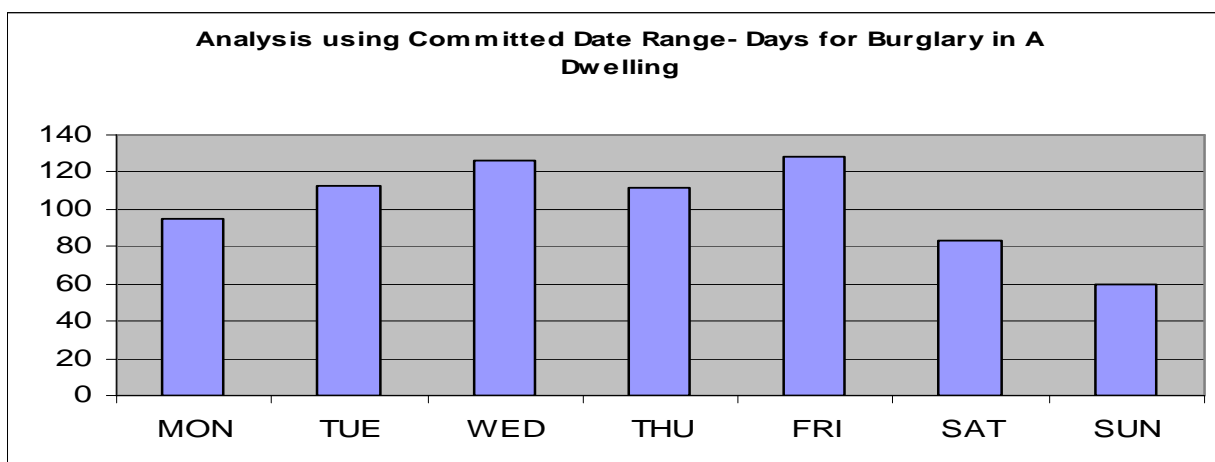


3.5 As shown above, Burglary in a Dwelling Offence numbers peaked in April, June and August this year, which is contrary to the seasonal trends.

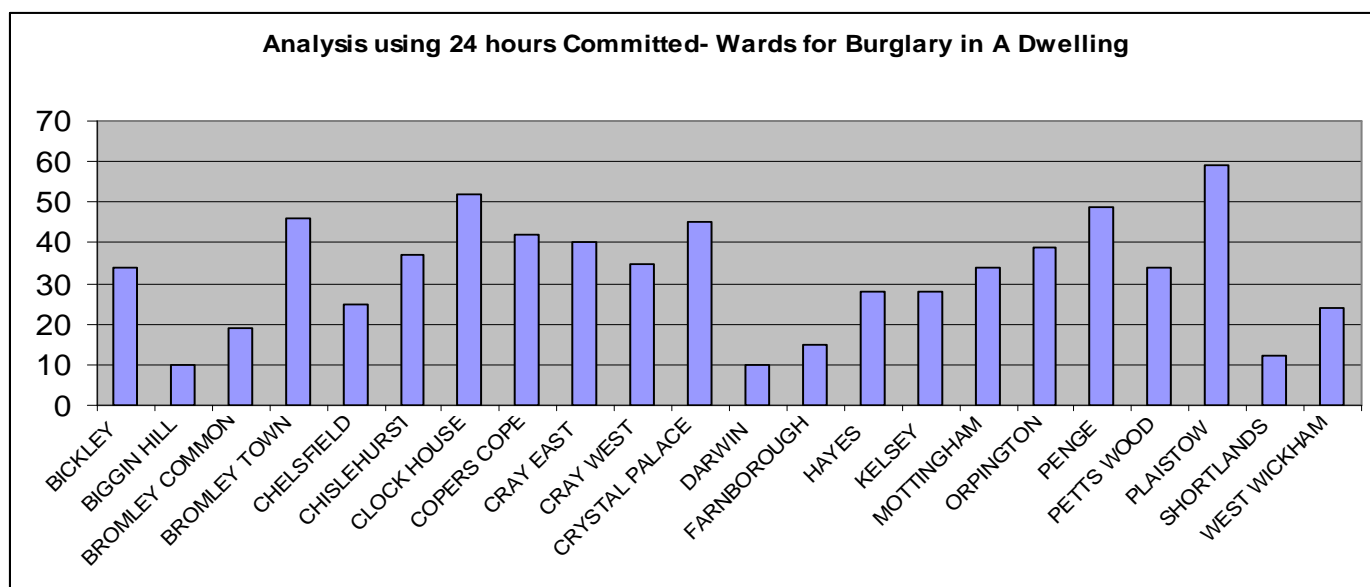


3.6 There are three main hotspot locations for Burglary in a Dwelling, Penge, Clockhouse, and Plaistow. Based on current issues affecting Bromley Borough these locations remain the main focus for the Police.

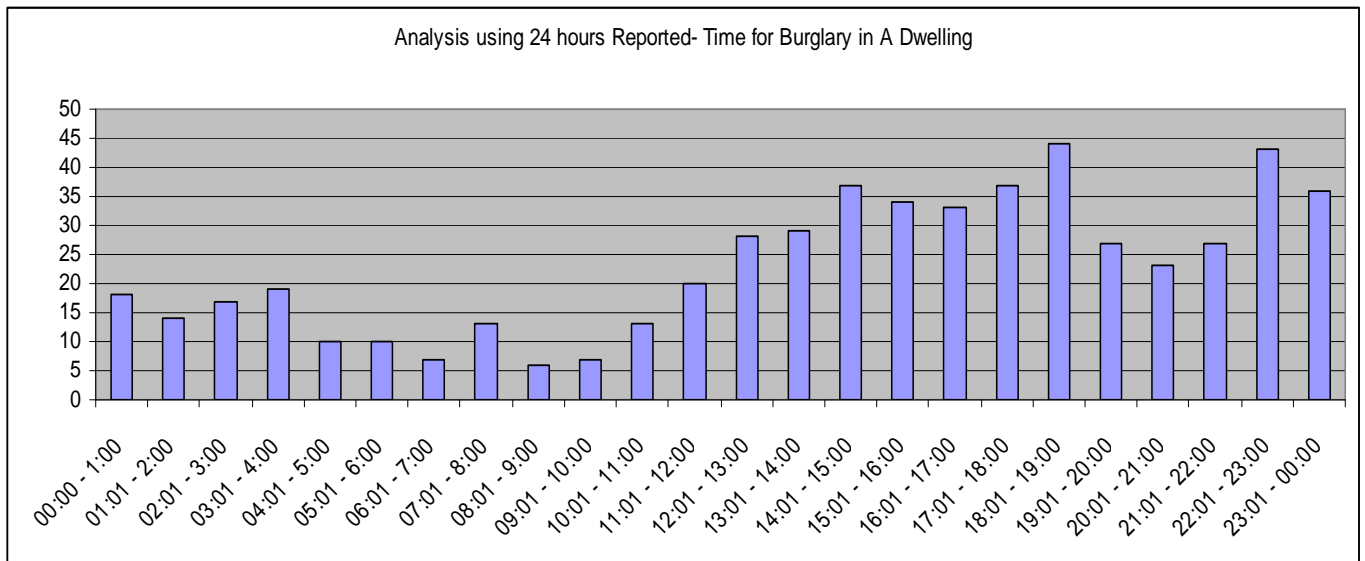
3.7 84% of the total Burglary in a Dwelling Offences were reported within 24 hours period this shows that Burglary actually occurred within the 24 hours.



3.8 Based on the above, 84% offences over the past two Quarters, there is a peak on Friday and Wednesday for offences. However, on further analysis, they are fairly spread out throughout the weekdays. It must be noted that weekend has seen the least number of offences reported.

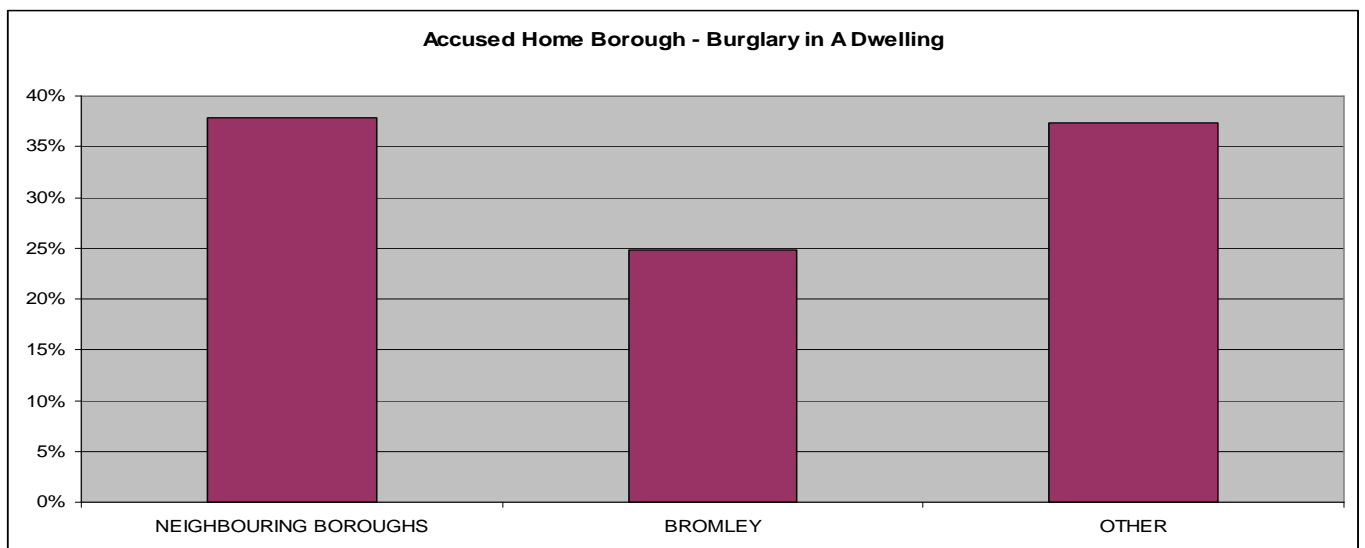


3.9 As shown above, Penge, Clockhouse, and Plaistow were the three main hotspots for Burglary in a Dwelling which was reported within 24 hours.



3.10 Burglary in a Dwelling reports seems to peak between the hours of 18:00 -19:01 and 22:01-23:00, when about 43% of reports were received during 18:01-23:00 period, of these 84% of the properties were empty more than one hour.

3.11 136 Burglary in a Dwelling offences were reported to police in this reporting period where properties were empty when this crime happened.



3.12 As can be seen 75% of accused offenders live out of Borough mainly, 28% live in Greenwich and another 28% live other Police force areas.

3.13 There were no specific targets victims identified, in general there were some vacant properties targeted either renovated or residents on holiday

This page is left intentionally blank

Meeting:	Safer Bromley Partnership Strategic Group
Date:	13 December 2012
Subject:	Putting Victims First – More Effective Responses to Anti Social Behaviour.
Author:	Colin Newman – Head of Community Safety colin.newman@bromley.gov.uk

1 SUMMARY

- 1.1 In June 2012, the Partnership received a report on the Government’s White Paper “Putting Victims First – More Effective Responses to Anti-Social Behaviour”. This report highlighted the key changes proposed within the White Paper and proposed that a further report would be presented to the Partnership as more details became available. As noted in June, the White Paper sets out proposals to change legislation and improve the range of tools that police and other agencies have to tackle anti-social behaviour. This paper sets out a proposed list of actions to ensure that the Safer Bromley Partnership is continuing to make progress in work to tackle anti-social behaviour and improve the services received by victims.

2 RECOMMENDATION

- 2.1 The Strategic Group is asked to reflect on the previous discussions in relation to the main proposals contained within the Government’s White Paper **Putting Victims First – More Effective Responses to Anti Social Behaviour** (www.homeoffice.gov.uk/crime/anti-social-behaviour/white-paper)
- 2.2 To clarify the proposed actions, the proposals are set out within three categories (relating to timing of actions):

Short Term Developments

- Establish an Anti-Social Behaviour Multi Agency Risk Assessment Conference
- Review and Identify links to other cross agency agenda e.g. Tackling Troubled Families, Reducing Harm Caused by Drugs and Alcohol,
- Adopt Matrix Assessment for collation and allocation of work.
- Identify and address key recording issues in relation to lead agencies e.g. Registered Social Landlord, Police, Local Authority.

Medium Term Developments

- Undertake a review of work with victims of Anti Social Behaviour and identify key developments for services in moving forward.
- Undertake review of current staffing levels across the Partnership agencies and identify recommendations for future working.

- Assess value of delivering Restorative Justice interventions across the borough (identify best practice from other boroughs).

Longer Term Objectives, Dependent on Implementation of Necessary Legislation

- Implement detail of recommended changes to existing powers (e.g. changes to Anti Social Behaviour Order)
- Further develop and implement proposals relating to the Community Trigger and Partnership response.
- Ensure the changes to measures such as Crack House Closures, Dispersal Orders etc are implemented effectively.

2 BACKGROUND INFORMATION

- 2.1 The Partnership first considered the key elements of the White Paper in June 2012. It is noted that, having produced a consultation document and the White Paper (Putting Victims First) the Government has yet to set a date for the legislative changes in order to facilitate some of the recommendations. This update report sets out a summary of the proposals contained within the White Paper before proposing a series of actions that will be taken by Partnership agencies in the next twelve months.
- 2.2 As highlighted in the previous report to the Partnership, the key changes proposed in the White Paper include the following six new powers that will be implemented as part of the review:
1. **The Crime Prevention Injunction** – this injunction will be available to a wide range of agencies. Proposals are that such an injunction could be used quickly to protect victims by dealing with anti-social behaviour by private tenants and owner occupiers, as well as social tenants.
 2. **The Criminal Behaviour Order** – this order would be available on conviction for any criminal offence which will allow courts to attach positive requirements to ensure perpetrators deal with the underlying issues driving their behaviour as well as including prohibitions to immediately protect victims.
 3. **The Community Protection Notice** – Aimed at dealing with particular anti-social behaviour impacting on a community's quality of life (for example to deal with noise, litter or graffiti).
 4. **The Community Protection Order (public space)** - A locally determined order which could impose controls on behaviour in public places, for example controlling drinking in public as well as preventing other behaviour which has an impact on quality of life.
 5. **The Community Protection Order (closure)** - Simplifying the current number of powers available to close premises that are a magnet for trouble.
 6. **The Direction Power** - A simpler and less bureaucratic power to enable the police to disperse situations to protect victims without needing to go through a long and slow process to designate an area in advance.

- 2.3 Whilst many of these proposed changes will require legislation, there are a number of key elements of the White Paper that can be implemented without additional or new legislation. One of the most important elements is the establishment and management of an effective forum for assessing and identifying action to tackle Anti Social Behaviour. The White Paper recommends and endorses the establishment of an Anti-Social Behaviour focused Multi Agency Risk Assessment Conference – Bromley already makes good use of this model of working in relation to cases of Domestic Abuse and it is proposed that a Partnership group will be formally established to consider cases of ASB. This development and how this new group will operate in the current structure is set out in Appendix B.
- 2.4 In addition to establishing a new ASB MARAC, it is proposed that greater and more formalised use be made of the Partnerships Matrix assessment form. This assessment and management tool (Appendix A) has been utilised by lead professionals in a wide range of agencies to identify and facilitated positive and coordinated responses to identified problems. In addition to drawing together some of this existing good practice, it is proposed that the new ASB MARAC will occupy a positive position from which to facilitate the introduction of new powers and orders proposed in the White Paper, thus facilitating a staged approach.
- 2.5 Moving to the medium term actions, it is noted that the establishment and operation of the ASB MARAC will take an appropriate primary emphasis on victims and associated needs. It is further proposed that additional work be undertaken to review the work of the Partnership in response to the victim’s position. In particular, it is proposed that work be undertaken with Victim Support in the borough in order to map the “victim journey” in relation to reporting incidents and identifying and achieving satisfactory outcomes. Also in the medium term, it is proposed that a review be undertaken of existing staffing levels within key Partnership agencies and also a review of the use of Restorative Justice tools in cases of Anti Social Behaviour.
- 2.6 In relation to longer term objectives, it is noted that primary amongst these will be the introduction of new powers and legislation as summarised on page 2 of this report. However, it is also noted that the current pilots in other parts of the country are working to identify positive implementation of the Community Trigger. The specific proposals in relation to the Community Trigger represent a high level duty on the local authority, Police and health agencies to deal jointly with complaints raised by members of the public. It is envisaged that the experience and lessons learnt from pilot areas will shape plans within Bromley.
- 2.7 The staged approach set out above will be complimented by regular updates to the Strategic Group that provide appropriate outlines of progress and facilitators and barriers to progress. These will be incorporated into the work programme for the New Year.

Victim/Informant:	Address:	D.O.B
Landlord:	Ethnicity	Additional Needs:

This scorecard is designed to help you identify vulnerable victims, witnesses, and complainants. It should be used as a guide, and in combination with your own judgement (and that of your neighbourhood partnership) to help ascertain what support and protection is required in any given situation. All action taken as a result of your assessment should be discussed with the witness to ensure it meets their needs.

1. Other than this occasion - how often do you have problems, what are they?	5 3 2 1 0	Daily Most days Most weeks Most months Only occasionally
2. Do you think the current incident is linked to previous incidents? If so why?	2 0	Yes No
3. Do you think that incidents are happening more often and/or are getting worse? How are they getting worse?	2 0	Yes No
4. Do you know the offender/ s? Details: Name, Address, D.O.B, Landlord, Details of behaviour:	2 1 0	They know each other well They are 'known' to each other They do not know each other
5. Does the perpetrator (or their associates) have a history of or reputation for Intimidation or harassment? Is so what?	6 4 2 0	Perpetrator or their associates are currently harassing the complainant Perpetrator or their associates have harassed the complainant in the past Perpetrator or their associates have not harassed the complainant, but have a history or reputation for harassment or violent behaviour Perpetrator or their associates have no history or reputation for harassment or intimidation
6. Have you informed any other agencies about what has happened? If yes, are you happy for us to discuss this problem with them? Agency Information: Agency, Contact Details, Email, Details of involvement	0 1	Yes No
7. Which of the following do you think that this incident deliberately targeted Specify: Apart from the effect on you, do you think anyone else has been affected by what has happened?	4 3 1 0	You Your family Your community None

<p>8. Do you feel that this incident is associated with your faith, nationality, ethnicity, Sexuality, gender or disability? Details:</p>	<p>3 0</p>	<p>Yes No</p>
<p>9. In addition to what has happened, do you feel that there is anything that is increasing you or your household's personal risk (e.g. because of personal circumstances) Details:</p>	<p>3 0</p>	<p>Yes No</p>
<p>10. How affected do you feel by what has happened? Details: How are they affected?</p>	<p>0 1 2 3 5</p>	<p>Not at all Affected a little Moderately affected Affected a lot Extremely affected</p>

<p>11. Has yours or anyone's health been affected as a result of this and any previous incidents? Details: If yes, how?</p>	<p>3 3</p>	<p>Physical health Mental health</p>
<p>12. Do you have any friends and family to support you?</p>	<p>3 3 1 0</p>	<p>Complainant lives alone and is isolated The complainant is isolated from people who can offer support The complainant has a few people to draw on for support The complainant has a close network of people to draw on for support</p>
<p>Please add any additional information that is relevant:</p>		

Based on these factors and your own judgement, adjust the scoring accordingly

Low 0 4 8 12 16 20 22 24 26 28 30 High

Date of Referral to Panel:

Referral Made By:

Matrix Score: High, Medium or Low

Can you provide details of what action has been taken so far:

Additional Special Instructions/Information

Has victim been referred to Victim Support or Safer Bromley Van:

CONSENT TO INFORMATION SHARING

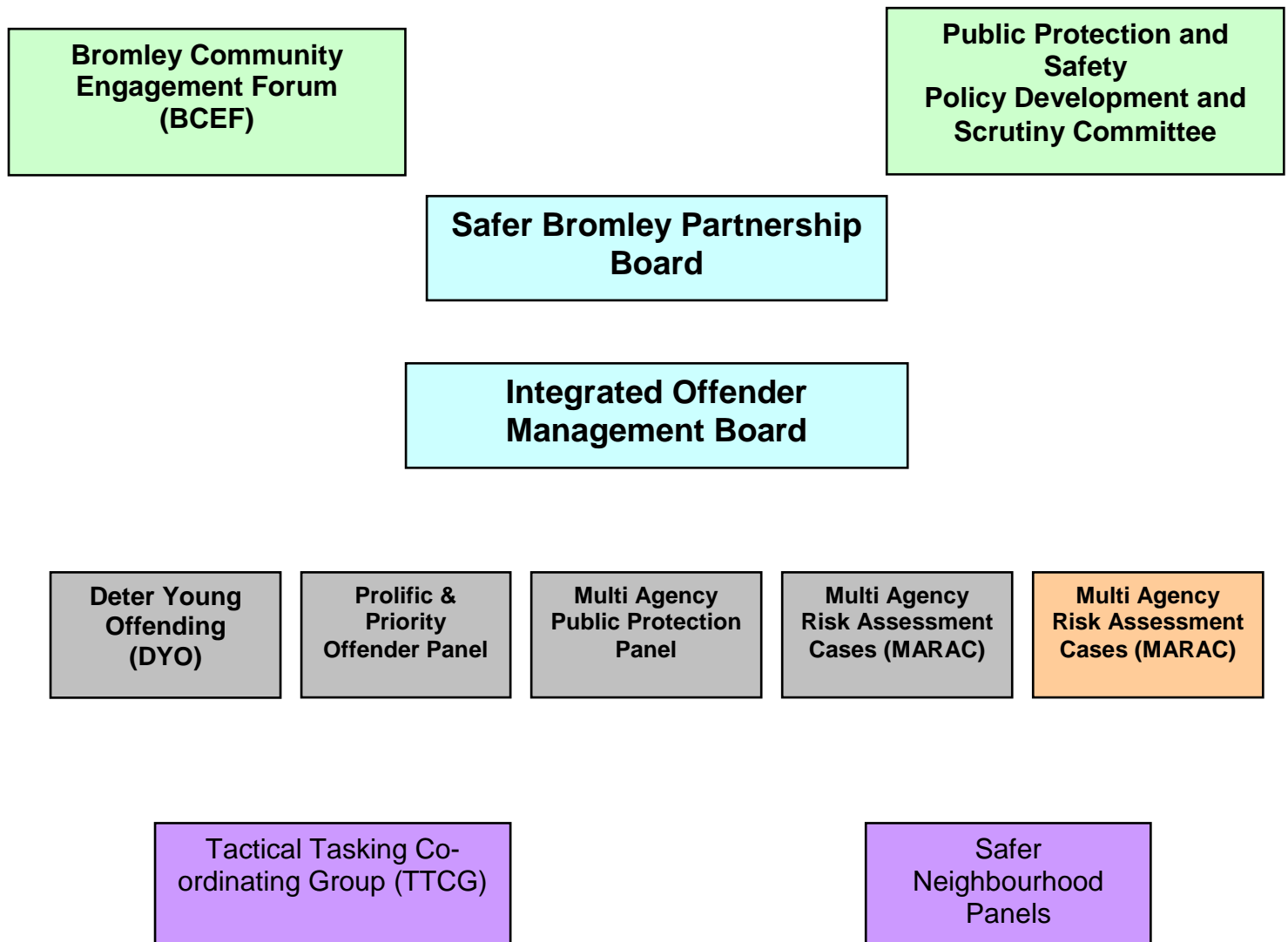
I consent to agencies obtaining and sharing information as part of the multi-agency work to help and secure my safety and that of my family.

If there are child protection concerns, information will be shared regardless of whether this form is signed.

Signature: _____

Date: _____

PRINT NAME: _____



This page is left intentionally blank

December 2012

Dear Sir/Madam,

In March 2013 the **saferbromley partnership** will hold its 7th annual awards evening. We are keen to give recognition to those individuals and organisations that have made a significant contribution in making Bromley a safer place to live, work and visit over the last year. In previous years it has been a great privilege to recognise and reward the valuable contribution made by a broad range of residents, employees and volunteers.

We are asking for nominations for those people who have made a real difference in your community - someone in your ward who you think deserves particular recognition for their work or achievements, someone you work alongside or someone who has made a real difference to your safety within the borough. This is your chance to show them that they are valued.

The awards are divided into *three categories*:

Community Champions ~ a member of the community who should be recognised for specific effort in making their local area safer.

Above And Beyond ~ someone who has excelled in their job to increase community safety in Bromley

Working Together ~ a person or organisation that has shown an example to others in how partnership working provides more effective change to community safety issues

Please find attached to this letter the form needed to nominate somebody in your community for a Safer Bromley award. Please complete and return this form by the deadline of **Friday 11 January 2013**.

Thank you very much for your help in recognising the valuable work that is undertaken by these important people in our borough.

Yours sincerely

Councillor Tim Stevens

Portfolio Holder for Public Protection and Safety
Chairman of Safer Bromley Partnership

Safer Bromley Awards Nomination Form 2012/2013

Nominee Information	
Name:	
Bromley Ward (if applicable) :	
Category Nominated for:	
Is the nominee aware they are being nominated?	
Nominee contact details (if known)	
Background of nominee (past work history, current capacity/organisation, achievements)	
Reason for nomination - please provide details of the work undertaken or actions of the individual that has led to making Bromley a safer place.	
Please include any further information to support this nomination here (more information can be attached)	

Nominator Information		
Name:	Tel. Number:	Email:
Organisation:		
Address:		
Relationship with nominee/how known:		

Please send your nomination either by email to:

colin.newman@bromley.gov.uk

Or post to:

Colin Newman
Head of Community Safety
London Borough of Bromley
Civic Centre
Stockwell Close
Bromley BR1 3UH

Closing date for nominations: Friday 11 January 2013

www.bromley.gov.uk/saferbromley

This page is left intentionally blank



THE LONDON BOROUGH
www.bromley.gov.uk

London Borough of Bromley News Release

4 December 2012
For immediate release

News from the Safer Bromley Partnership

Firefighters given commendation for saving life

Quick-thinking Bromley firefighters who used their training and first aid equipment to save a man's life outside their station were awarded a commendation certificate by London Assembly Member James Cleverly and Safer Bromley Partnership Chairman Cllr Tim Stevens at a short commendation ceremony at the Civic Centre on Friday 30 November.

Mr Stephen Gowler, a major with the Salvation Army was passing the fire station in South Street when he collapsed and eagle-eyed firefighters from Blue Watch swung into action to use a defibrillator. He attended the commendation ceremony with his wife and gave an emotional speech outlining events that he had enjoyed recently, such as his wedding anniversary, which he would have missed had it not been for the intervention of the fire team on that particular day.

Before presenting the certificate, James Cleverly spoke to the local fire team: "What I prize in the Fire Service is your flexibility and commitment and you demonstrated this hugely by the way in which you reacted so quickly in coming to the rescue of Mr Gowler." He thanked the team and joked with Mr Gowler that he was grateful for his input into the training of his Fire Officers."

Cllr Tim Stevens said: "I was very touched by Mr Gowler's story and want to thank the fire team personally. I am proud of the service they give here in Bromley and for their commitment to partnership working."

Picture shows: (Front row ltor) Cllr Tim Stevens, Mr Gowler, Crew Manager Paul Digby, Mrs Gowler and James Cleverly pictured with station manager Terry Gooding (second row third from left) and firefighters from Blue Watch.

Notes to editors:

- The Safer Bromley Partnership is committed to continuously improving safety in Bromley. We want a borough where people can live, work, play and learn safely. Our members include Bromley Council, Bromley Police, Health, Probation, Fire and London Ambulance Services, Affinity Sutton and other Housing Associations.

For media enquiries, please contact Susie Clark in Corporate Communications, on 020 8461 7911 or email susie.clark@bromley.gov.uk

This page is left intentionally blank

BROMLEY BOROUGH COMMANDER'S NEWSLETTER



DECEMBER 2012

Welcome to December's newsletter.

Whilst 2012 has seen reductions in crime and disorder across Bromley – some of them quite large reductions - residential burglary is unfortunately still showing an increase.

Although we have a significant amount of our, and indeed the Metropolitan Police Service's, resources are dedicated to tackling this problem I continue to appeal for householders and car users to be vigilant. Lock doors and windows, and please do not leave your car keys by the front door. Do not leave valuables in your car either. These two simple things would help to reduce crime in Bromley. Car crime and burglary account for almost 30% of our total crime. Your vigilance can make a difference!

The start of the month sees us begin our Christmas drink drive campaign. In 2011, 280 people were killed as a result of drink driving - did you know last year more people failed breath tests between 6am-11am than between 11pm-1am during the Christmas period?

Make sure that's not you, please don't drive impaired, don't take the chance. Plan your evenings out properly, use public transport or have a designated non-drinking driver. Please remember that alcohol affects everyone differently and can still be in your system many hours after you have drunk.

As we enter the festive season it is important that whilst celebrating we remain vigilant. The thieves take advantage of this time of year. Shopping for presents in the run up to Christmas is ideal opportunity for criminals to target cars and shoppers, so there is motor vehicle and pick-pocketing crime prevention advice included in this month's newsletter.

I encourage everyone to think of their own personal safety, to look after their family and friends, and to be a good neighbour. I wish everyone a safe Christmas and a prosperous New Year.



Steph Roberts
Borough Commander

BROMLEY BOROUGH COMMANDER'S NEWSLETTER



DECEMBER 2012

Operation Hawk success continues in Bromley

Our offensive against drug-related crime is continuing to be successful, with at least one drugs warrant being executed every day across the borough.

Operation Hawk, which was relaunched to target drug dealing in September, continues to target cannabis farms, crack houses and suspected drug dealers across the borough and has now notched up in excess of 65 raids with 38 people being arrested for drug related offences. A number of those arrested have also been further arrested for additional offences such as burglary, money laundering, handling stolen goods, theft, possession of a prohibited weapon and offences under the dangerous dogs act.

Operation Hawk, which is being led by local Safer Neighbourhoods officers, follows a renewed call to residents to encourage them to come forward with information about who may be selling or cultivating drugs in their area.

While activity to tackle drugs dealing has always been a high priority for us, with major operations carried out with partners against high-level dealers on a regular basis, Operation Hawk has been refocused to increase operational activity on drug dealing at the street level.

Drug dealing damages communities, generating crime, disorder and anti-social behaviour. We are determined to tackle this issue head on by bringing together our resources to reclaim and help repair areas affected by drug dealing.

Community intelligence passed to us will be dealt with as quickly as possible and carefully assessed before any action taken. With your help we can make your local neighbourhood safer. You make the call, we'll make it stop.

Three years for Bromley drug offender

A Bromley man has been jailed for three years after a large quantity of cocaine, MDMA and cannabis were found secreted around his house.

Byron Campbell, age 33, of Homefield Road, Bromley was jailed for three years after pleading guilty to possession with intent to supply Class A drugs (cocaine), possession of a Class A drug (MDMA) and possession of a Class B drug (cannabis) at Croydon Crown Court.



Officers from our Crime Squad executed a search warrant at Campbell's home address on 4th April 2012. A systematic search of all the rooms revealed a large quantity of drugs hidden in two bedrooms, the kitchen and the lounge. Campbell was arrested at the scene.

A large safe was found hidden in a landing cupboard, which Campbell found he did not have a key for or know what was inside it. When it was forced open at Bromley Police station it was found to contain a large quantity of drugs, both powder and compressed blocks.



BROMLEY BOROUGH COMMANDER'S NEWSLETTER



DECEMBER 2012

Catford drug offender jailed for two years and four months

A Catford man has been jailed after being caught in possession of crack cocaine in Beckenham.

James Heneghan, age 39, of Montacute Road, Catford was jailed for two years and four months after pleading guilty to possession with intent to supply crack cocaine at Croydon Crown Court.



Officers were on routine patrol in Beckenham when they saw a Vauxhall Corsa acting suspiciously in Calverley Close. Police followed the vehicle and stopped it in Beckenham Hill. Upon searching the vehicle officers found 27 wraps of crack cocaine, a number of mobile phones, other drug related paraphernalia, along with a quantity of cash.

Heneghan was arrested on suspicion of possession with intent to supply drugs and his vehicle – which was uninsured – was also seized.

Convictions such as these show that we here at Bromley Police are committed to tackling those people involved in the supply of illegal drugs and will continue to target offenders and proactively seek to disrupt their criminality. Our message continues to be 'If you deal drugs in Bromley, prepare to be arrested at any time'.

Burglar jailed for four years

A Carshalton man has been jailed for a four years for an Orpington burglary.

James Cotman, aged 45, of Park Hill, Carshalton, Surrey pled guilty to burglary and was sentenced to four years imprisonment at Croydon Crown Court.

Cotman was seen acting suspiciously in Felstead Road, Orpington during the evening of 30th August 2012 by an alert member of public who immediately contacted the police. Officers attended and stopped Cotman, finding him in possession of screwdrivers, a torch and a quantity of jewellery in boxes. He was arrested for going equipped to steal.

Later that day the occupiers of a house in Felstead Road returned home to find that it had been burgled. Officers showed them the property that was recovered from Cotman, and they confirmed that it was theirs.



Cotman even had a framed photograph of the victims on their wedding day hidden in his bag. Cotman was further arrested for burglary.

Cotman was apprehended and brought to justice due to the vigilance of a local resident and I would like to appeal for the continued support from the community to be vigilant and always report any suspicious behaviour to us. Please immediately ring 999 if you see anyone acting suspiciously.



BROMLEY BOROUGH COMMANDER'S NEWSLETTER



DECEMBER 2012

Vehicle crime warning

Shopping for presents in the run up to Christmas is ideal opportunity for criminals to target cars, so we would ask people to take a series of simple steps to prevent themselves becoming a victim:

- Most vehicle crime is preventable. It can take as little as 10 seconds for a thief to steal something from your car. If at all possible, leave nothing on view.
- NEVER leave valuable items in your car - cash, credit cards, chequebook, mobile phones, vehicle documents or other valuables in the car. This includes your Sat Nav!
- Don't leave presents or purchases from on the back seat
- Always close the windows and sunroof; lock the doors and activate any security devices when leaving your car unattended.
- Always park with care, particularly at night or if you are leaving the vehicle for a long time. If possible, park in a busy, well-lit area.

We are aware that the festive season does provide more opportunities for thieves, and we'd urge everyone just to take a bit of extra care to have a secure and crime free Christmas.

Cadets raising burglary awareness

Our young volunteer police cadets have been out and about at locations across the borough distributing burglary crime prevention packs, as part of the local anti-burglary initiative Operation Flint. The cadets have been handing in excess of 600 leaflets/packs a day, two nights a week, throughout November and will be continuing to do so at locations across the borough in the run up to Christmas.



BROMLEY BOROUGH COMMANDER'S NEWSLETTER



DECEMBER 2012

Pick-pocket warning

We are warning residents to be wary of pick-pockets when out shopping in the lead up to Christmas.

Police would suggest taking following precautions whilst out shopping in order to avoid becoming the victim of a pick-pocket or purse-dipper:

- Carry your bag close to you with the clasp facing inwards. Keep it zipped up, and make sure your wallet or purse can't be seen. Don't carry large amounts of cash.
- When at a bar, restaurant or cafe, keep your belongings safe. Keep bags where you can see them but out of reach of passers by. Use bag hooks under tables if they are available.
- If you use your mobile phone on the street be aware of your surroundings whilst you're on the phone and after your call has ended.
- Spread your possessions about - keep your mobile phone separate from your purse, and your keys separate from your credit card.
- Beware when using cash dispensers. Criminals target people when using these machines.
- Cover up any expensive jewellery and, if you must carry other valuables, be discreet.

Robbers jailed for six years



Two robbers and their accomplice have been jailed for a total of six years after assaulting a man and stealing his laptop and cameras.

Sean Trowers, age 22, of Queens Road, Bromley pled guilty to robbery and was jailed for 40 months, Craig

Ogunshakin, age 21, of Rafford Way, Bromley pled guilty to robbery and was jailed for 32 months and Tammy Thackery, age 20, of Plaistow Lane, Bromley pled guilty to robbery and was jailed for 12 months, suspended for two years, at Croydon Crown Court.

The 20 year old victim, who was a casual acquaintance of Thackery, was lured to Palace View in Bromley by her whilst on his way home from work and was robbed of his bags containing a laptop computer and photographic equipment. The suspects were traced through CCTV footage and mobile phone records.

BROMLEY BOROUGH COMMANDER'S NEWSLETTER



DECEMBER 2012

Police in Bromley raise counter terrorism awareness

Bromley Police officers were part of a major pan-London operation to raise awareness of protective security and counter terrorism in late November and early December.

The initiative - known as Operation Penna - involved co-ordinated activity focused on reminding the public of the vital role they can play in protecting London from terrorism.

As such, we would like to encourage residents to remain vigilant and alert and to report anything suspicious to police:

- We want you to look out for the unusual - some activity or behaviour which strikes you as not quite right and out of place in your normal day to day lives.
- You may feel it's probably nothing, but unless you trust your instincts and tell us we won't be able to judge whether the information you have is important or not.
- Remember, no piece of information is considered too small or insignificant.
- Our specially trained officers would rather take lots of calls which are made in good faith, but have innocent explanations - rather than not getting any at all.
- All information passed to the police is treated in the strictest of confidence. It is thoroughly analysed and researched by experienced officers before, and if, any police action is taken.

Suspicious activity could include someone:

- Who has bought or stored large amounts of chemicals, fertilisers or gas cylinders for no obvious reason.
- Who has bought or hired a vehicle in suspicious circumstances.
- Who holds passports or other documents in different names for no obvious reason.
- Who travels for long periods of time, but is vague about where they're going.

Anyone who has any information about unusual activity or behaviour should contact the confidential Anti-Terrorist Hotline on 0800 789 321. In the event of an emergency always dial 999.

Although the threat from terrorism has not increased, it remains real and serious. Protective security is a key element of our counter terrorism strategy as it creates a hostile environment for those planning terrorist attacks. Everyone has a role to play in keeping London safe from terrorism.



BROMLEY BOROUGH COMMANDER'S NEWSLETTER



DECEMBER 2012

Fraudster jailed for five years

A 51 year old man has been jailed for five years after pleading guilty to fleecing a couple out of their life savings.

Stephen Ross, aged 51, of Drake Mews, Bromley pled guilty to two counts of fraud and was jailed for five years at Croydon Crown Court. A further three counts of fraud were ordered to remain on file by the Court.



Ross's modus operandi was to befriend his victims, claiming to be employed as a broker at Rothschilds Banking Group and telling them that he was a personal investor for, or a friend of, amongst others Sir Robin Fellowes (personal equerry to HM Queen), Bryan Adams (pop star), Sir Richard Branson (entrepreneur), Sir Paul McCartney (pop star), Pete Waterman (music mogul), George Michael (pop star) and Simon Cowell (music mogul).

He groomed his victims for years to win their trust and shamelessly used his disability (he only has one leg) to lower the victim's defences and get them to trust him – indeed he even claimed that he had lost his leg in the July 2005 London bombings, which is untrue. He then offered them the chance to invest money in schemes with 'guaranteed' returns

His victims paid tens of thousands of pounds to Ross to invest, money which he then used to fund his lavish lifestyle. None of the people or institutions named by Ross have any knowledge of him.

Ross is an accomplished confidence trickster and convincing storyteller who has conned people from all walks of life, including vulnerable people and business owners. He also shamelessly used his disability to appear frail in order to lower the victim's defences and trust him. However, this facade slipped when Ross was challenged by the victims about the money, when he became an aggressive bully.

He left his victims not only financially out of pocket but also left feeling defenceless and upset. People put their trust in this individual and handed over money that they couldn't afford to lose.



BROMLEY BOROUGH COMMANDER'S NEWSLETTER



DECEMBER 2012

Domestic Abusers targeted

A series of dawn raids took place across the borough during the last week in November to help end the suffering caused by domestic abusers.

The scale of the violence and abuse caused by those in domestic relationships is shocking. About one third of all women will suffer some form of physical or sexual abuse at the hands of their partners.

Suffering behind closed doors should not and cannot be ignored. We all have a responsibility to put a stop to domestic violence.

Led by specially trained officers in the borough's Community Safety Unit, this operation was timed to support White Ribbon Day - the International Day for the Elimination of Violence Against Women which was on Sunday 25 November. Under the banner of Operation Athena the Metropolitan Police targeted prolific and dangerous offenders responsible for both domestic violence and hate crime.

We are committed to tackling all of forms violence, and will make sure we play our part in supporting and protecting victims of both sexes. It is also importantly about demonstrating to abusers that their actions have legal, and in some cases, long lasting consequences.

There is no place in London for domestic violence or those cowardly crimes committed because of someone's race, religion, sexuality or disability. It is the offenders who should live in fear - of our knock at the door.

The Metropolitan Police Service works with a wide range of third parties to make sure that all possible support is given to victims of domestic violence and hate crime. We will also take reports and information from those people who aren't comfortable talking to police direct.

Uninsured porche latest to be removed from Borough's roads

A porche has been seized and removed from the roads after the driver was found to be uninsured. The porche was stopped in Elmers End Road, Bromley after a child was seen in the front seat without a child seat and with an out of date tax disc displayed on the vehicle. The vehicle was also found to be uninsured, with £320 worth of penalty notices issued against it. Over 550 uninsured vehicles have now been seized and removed from Bromley's roads since March of this year.



BROMLEY BOROUGH COMMANDER'S NEWSLETTER



DECEMBER 2012

Help us to help you from becoming a victim of burglary.....

Having your home burgled can be a traumatic experience, and therefore we are determined to reduce the chances of it happening in the first place by raising peoples' awareness of security. 36 per cent of burglaries result from insecure properties – please don't let your home become a target. Help us to protect your home by taking simple steps such as using timers to turn lights and radios on, fitting alarms, making sure homes are properly locked and by keeping valuables and presents out of view.

Please be vigilant and use these simple steps to secure your home and keep criminals out.

Our ten top burglary crime prevention tips for residents:

1. Mark or etch your property with your postcode, house or flat number or the first three letters of your house name.
2. Register items with a serial number at www.immobilise.com
3. Do not leave your car keys, valuables or ID documents near a door, letterbox or window.
4. Always check who's at the door and don't open it if you feel anxious.
5. Close and lock all your doors and windows, even if you are only going out for a few minutes.
6. Keep your valuables out of sight
7. Leave some lights on if it will be dark before you get home
8. Fit a mortice lock to your front door and other external doors. Consider installing a burglar alarm.
9. Always keep sheds and outbuildings locked
10. Cancel milk or other deliveries if you will be away for days or weeks at a time.



BROMLEY BOROUGH COMMANDER'S NEWSLETTER



DECEMBER 2012

*****Sign up now to regularly receive information from the Police*****

Neighbourhood Link

Neighbourhood Link is a free service that enables you to regularly receive information from the police about crime and safety in the areas you sign up to. It will also be used by the Metropolitan Police Service to keep you informed in the event of a major incident impacting on London.

To register please visit www.neighbourhoodlink.met.police.uk.

Contact numbers for Bromley Police's Safer Neighbourhood Teams

Bickley	07920 233 852
Biggin Hill	07880 783 736
Bromley Common & Keston	07920 233 855
Bromley Town	07887 826 502
Chelsfield & Pratts Bottom	07920 233 857
Chislehurst	07920 233 850
Clock House	07920 233 847
Copers Cope	07766 804 406
Cray Valley East	07880 788 942
Cray Valley West	07920 233 851
Crystal Palace	07920 233 858
Darwin	07920 233 859
Farnborough & Crofton	07920 233 856
Hayes & Coney Hall	020 8649 3548
Kelsey & Eden Park	07920 233 846
Mottingham & Chislehurst Nth	07880 781 483
Orpington	07766 804 412
Penge & Cator	07843 065 880
Petts Wood & Knoll	07920 233 853
Plaistow & Sundridge	07920 233 849
Shortlands	07920 233 848
West Wickham	07920 233 854

Internet Address: www.met.police.uk/bromley

Non emergency contact number 101 **In an emergency always dial 999**

Bromley Community Engagement Forum 020 8658 7168

